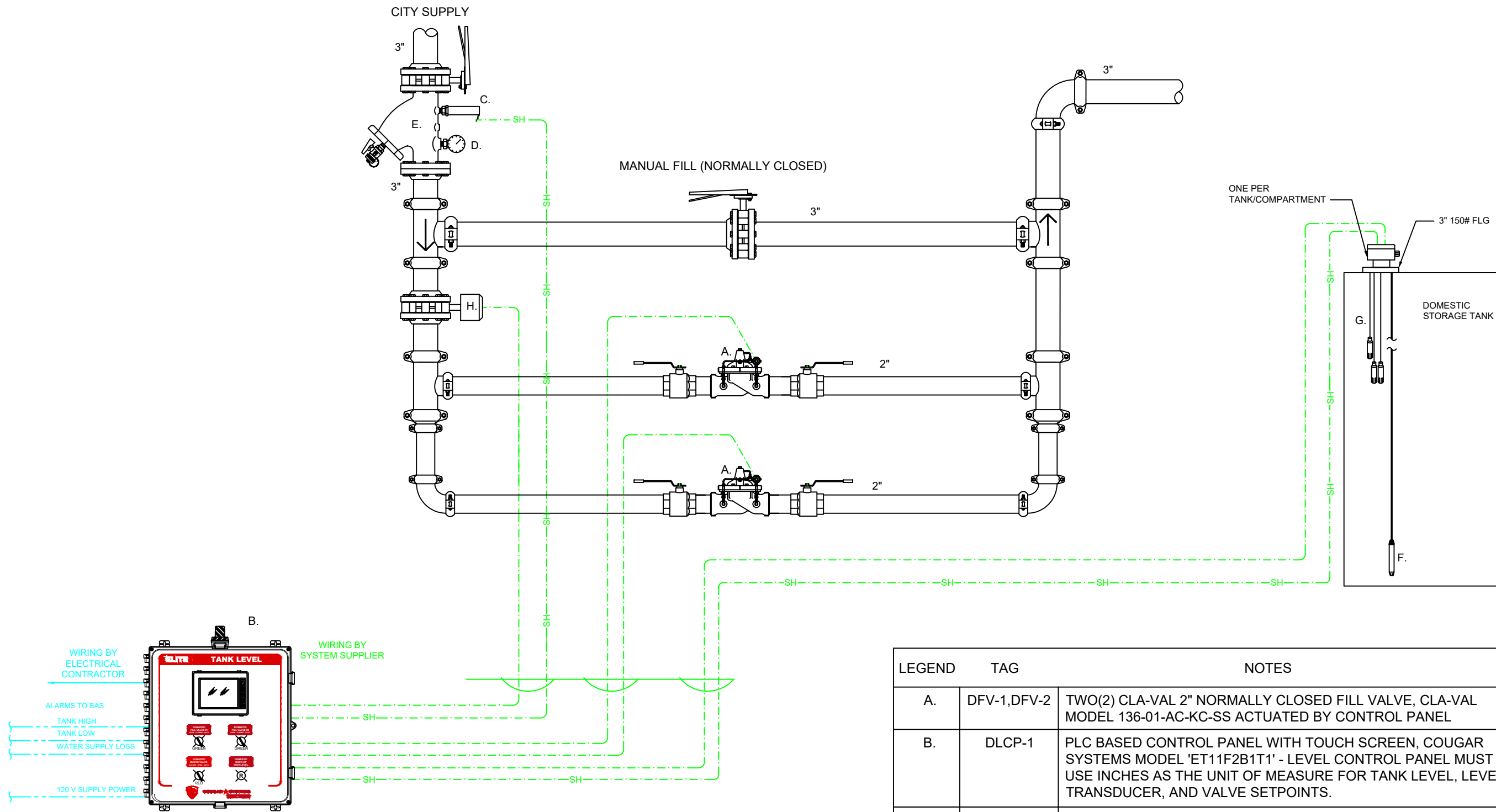


C:\Users\lmorris\AppData\Local\Temp\AcPublish-1142188\2. Detail - 2 Inch Domestic Fill Station.dwg - Wednesday, December 02, 2020 - 2:09 PM - lmorris



BLUE INDICATES "COORDINATE WITH OTHER DISCIPLINES"

----- INDICATES FIELD WIRING BY SYSTEM SUPPLIER

ALL RELATED LOCAL CONTROL WIRE & CONDUIT BY SYSTEM SUPPLIER TO ENSURE A COMPLETE, COORDINATED AND FUNCTIONAL SYSTEM

LEGEND	TAG	NOTES
A.	DFV-1,DFV-2	TWO(2) CLA-VAL 2" NORMALLY CLOSED FILL VALVE, CLA-VAL MODEL 136-01-AC-KC-SS ACTUATED BY CONTROL PANEL
B.	DLCP-1	PLC BASED CONTROL PANEL WITH TOUCH SCREEN, COUGAR SYSTEMS MODEL 'ET11F2B1T1' - LEVEL CONTROL PANEL MUST USE INCHES AS THE UNIT OF MEASURE FOR TANK LEVEL, LEVEL TRANSDUCER, AND VALVE SETPOINTS.
C.		CITY PRESSURE TRANSMITTER
D.		PRESSURE GAUGE, WINTERS LF SERIES
E.	DS-1	NEXUS STRAINEX MODEL SXFV, WITH BUTTERFLY VALVE, STRAINER AND BLOW-DOWN VALVE
F.		SUBMERSIBLE PRESSURE TRANSDUCER
G.		BACK UP HIGH/LOW LEVEL PROBE
H.	DBV-1	MOTOR OPERATED FLOOD PROTECTION VALVE, ACTUATED BY CONTROL PANEL