

TANK-AXONOMETRIC

TANK COMPONENTS				
No.	Description	Material	Qty	Remarks
1	Water tank	FRP	1	Colour GRAY
2	Manhole Cover	FRP	1	S/S Hinges & Locks
3	Internal Ladder	FRP/SS	1	Height : 2m
4	External Ladder	G.I.	1	Height : 2m
5	Air vent	PVC	2	Light & Insect Proof 4" Cow Type
6	Flanges	Class 150	-	SS 304 Connection Flange
		Class 150	-	SS 304 Connection Flange
		Class 150	-	Steel Threaded Flange
		Class 150	-	Steel Threaded Flange
		Class 150	-	Steel Threaded Flange
		PVC	-	Connection Flange
7	Water Level Indicator	C&M	2	Height : 2m
8	Vortex Assembly	FRP	2	Vortex plate Assembly
9	Side Man Way	FRP	2	-
10	Inspection Lid	FRP	1	-

NOTES:		CAUTIONS	
1. Allow a minimum space of 50 cm all around the tank's foundation.		2. Maximum allowable deflection in concrete foundation = +/- 2mm.	
3. For sizes of items 6, 7, 8, 9 & 10, please refer to catalogue.		4. FTC will not be held liable if the erection of our water tanks are not made in accordance to the technical requirements of concrete foundation, steel footing and water tank assembly drawings.	
5. Overflow shall be minimum twice the volume of inlet.		6. Overflow shall flow freely to the ground.	
7. All tanks shall be electrically grounded.			

GRP Panel Type Water Tanks			
Seismic Load Kh=0.3G			
Tank size:	(8+0.32+1.47)x6.56x8.2ft High. (2.45+0.1+0.45)x2x2.5 m HIGH		
Volume:	15 m <sup>3</sup>	3962 USG	Usable 2851 + x
Bolts / Nuts:	S/S A4 - 316		
Insulation:	Non-Insulated		

Project Name:	
Template	

Contractor:	
Cougar USA	

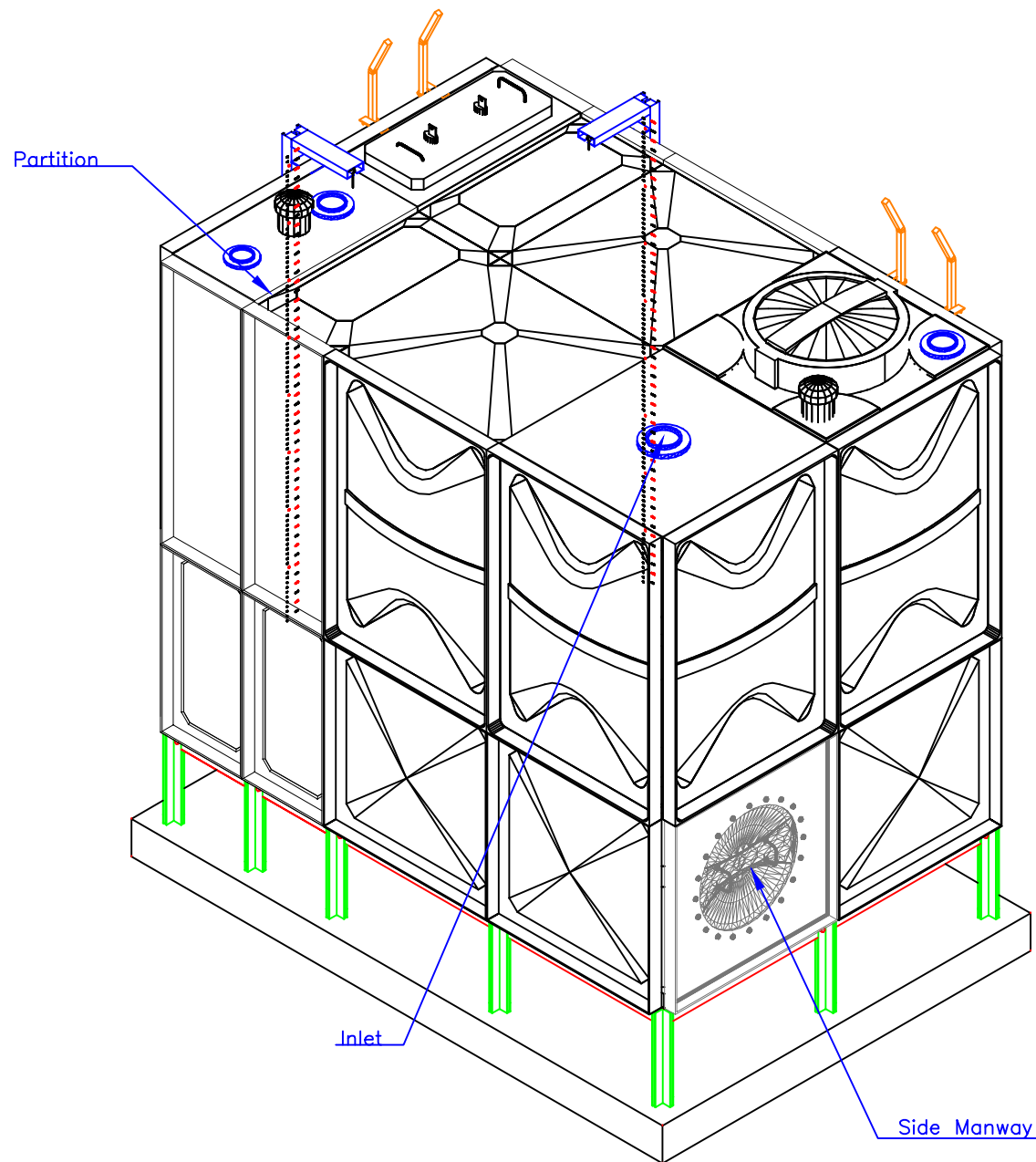
Consultant:	
-	

Done By:	JC	Reviewed by:	
Verified by:		Verified by:	-

Revisions		
No.	Issue Date	Description
1	25Sept'20	NEW

<b>FTC</b> FIBER TECHNOLOGY CORPORATION	
Head Office:	
Lorton, Virginia, United States of America	
Regional Office:	
Jebel Ali Free Zone, Dubai, U.A.E.	

Copyright Fiber Technology Corporation



TANK-AXONOMETRIC

TANK COMPONENTS				
No.	Description	Material	Qty	Remarks
1	Water tank	FRP	1	Colour GRAY
2	Manhole Cover	FRP	1	S/S Hinges & Locks
3	Internal Ladder	FRP/SS	1	Height : 2m
4	External Ladder	G.I.	1	Height : 2m
5	Air vent	PVC	2	Light & Insect Proof 4" Cow Type
6	Flanges	Class 150	-	SS 304 Connection Flange
		Class 150	-	SS 304 Connection Flange
		Class 150	-	Steel Threaded Flange
		Class 150	-	Steel Threaded Flange
		Class 150	-	Steel Threaded Flange
		Class 150	-	Steel Threaded Flange
		PVC	-	Connection Flange
7	Water Level Indicator	C&M	2	Height : 2m
8	Vortex Assembly	FRP	2	Vortex plate Assembly
9	Side Man Way	FRP	2	-
10	Inspection Lid	FRP	1	-

- NOTES:
- CAUTIONS
1. Allow a minimum space of 50 cm all around the tank's foundation.

2. Maximum allowable deflection in concrete foundation = +/- 2mm.

3. For sizes of items 6, 7, 8, 9 & 10, please refer to catalogue.

4. FTC will not be held liable if the erection of our water tanks are not made in accordance to the technical requirements of concrete foundation, steel footing and water tank assembly drawings.

5. Overflow shall be minimum twice the volume of inlet.

6. Overflow shall flow freely to the ground.

7. All tanks shall be electrically grounded.

GFRP Panel Type Water Tanks			
Seismic Load Kh=0.3G			
Tank size:	(8+0.32+1.47)x6.56x8.2ft High.		
	(2.45+0.1+0.45)x2x2.5 m HIGH		
Volume:	15 m <sup>3</sup>	3962 USG	Usable 2851 + z
Bolts / Nuts:	S/S A4 - 316		
Insulation:	Non-Insulated		

Project Name:

Template

Contractor:

Cougar USA

Consultant:

-

Done By:	JC	Reviewed by:	
		Verified by:	-

Revisions		
No.	Issue Date	Description
1	25Sept'20	NEW

FTC

FIBER TECHNOLOGY CORPORATION

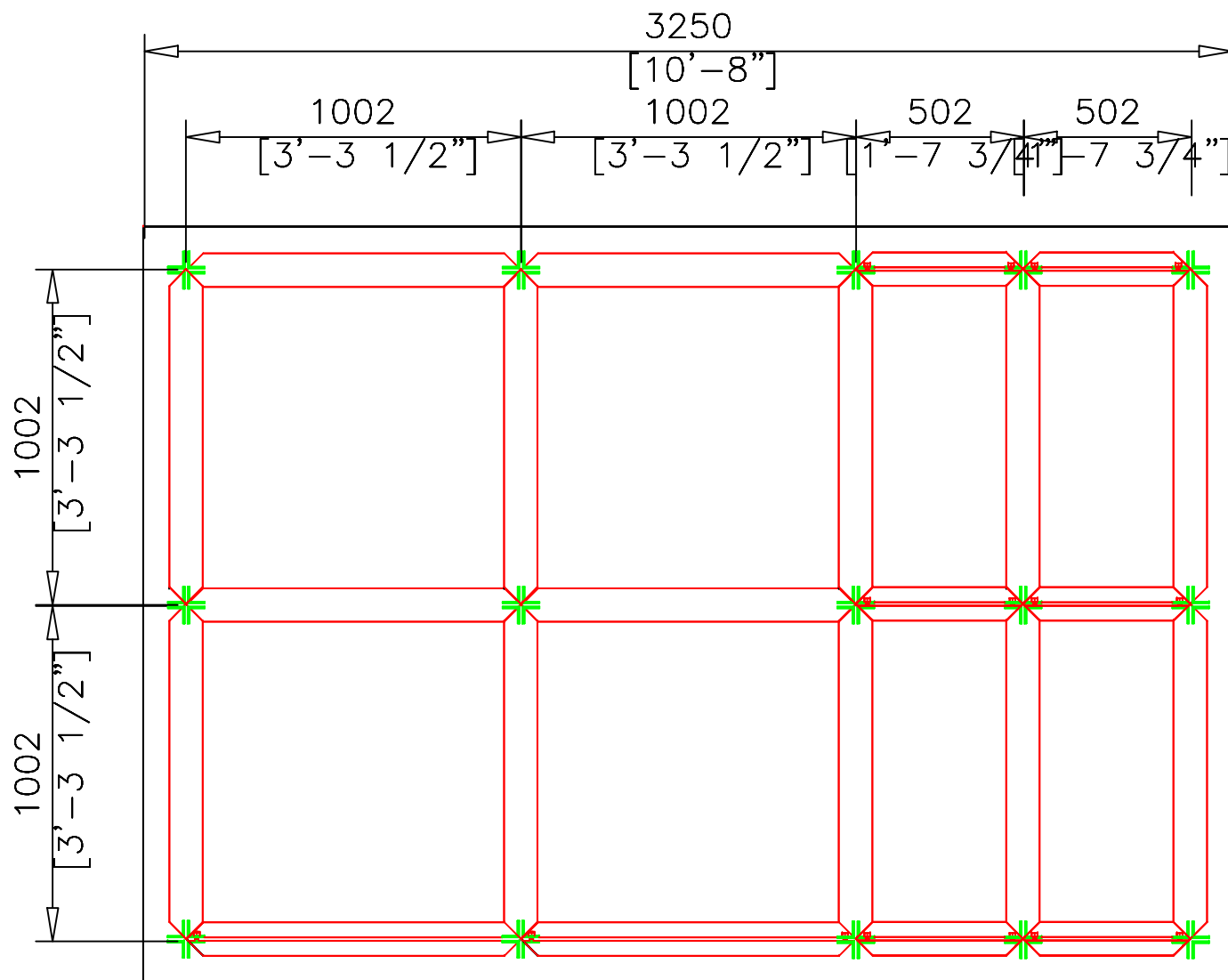
Head Office:

Lorton, Virginia, United States of America

Regional Office:

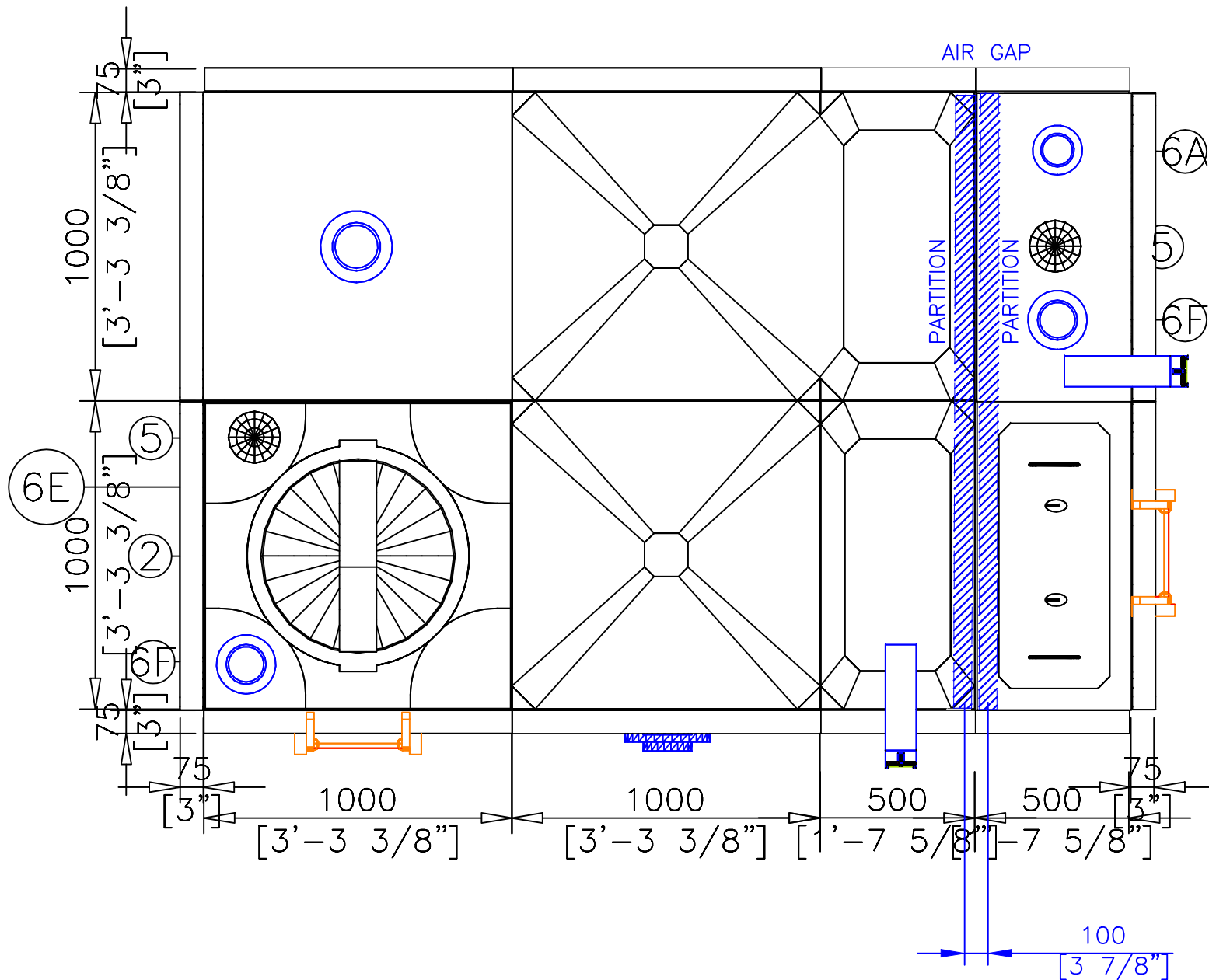
Jebel Ali Free Zone, Dubai, U.A.E.

Copyright Fiber Technology Corporation



STEEL FOOTING-PLAN

TANK COMPONENTS				
No.	Description	Material	Qty	Remarks
1	Water tank	FRP	1	Colour GRAY
2	Manhole Cover	FRP	1	S/S Hinges & Locks
3	Internal Ladder	FRP/SS	1	Height : 2m
4	External Ladder	G.I	1	Height : 2m
5	Air vent	PVC	2	Light & Insect Proof 4" Cow Type
6	Flanges	A Class 150	-	SS 304 Connection Flange
		B Class 150	-	SS 304 Connection Flange
		C Class 150	-	Steel Threaded Flange
		D Class 150	-	Steel Threaded Flange
		E Class 150	-	Steel Threaded Flange
		F PVC	-	Connection Flange
7	Water Level Indicator	C&M	2	Height : 2m
8	Vortex Assembly	FRP	2	Vortex plate Assembly
9	Side Man Way	FRP	2	-
10	Inspection Lid	FRP	1	-
NOTES:				
CAUTIONS				
1. Allow a minimum space of 50 cm all around the tank's foundation.				
2. Maximum allowable deflection in concrete foundation = +/- 2mm.				
3. For sizes of items 6, 7, 8, 9 & 10, please refer to catalogue.				
4. FTC will not be held liable if the erection of our water tanks are not made in accordance to the technical requirements of concrete foundation, steel footing and water tank assembly drawings.				
5. Overflow shall be minimum twice the volume of inlet.				
6. Overflow shall flow freely to the ground.				
7. All tanks shall be electrically grounded.				
GRP Panel Type Water Tanks				
Seismic Load $K_h=0.3G$				
Tank size:		(8+0.32+1.47)x6.56x8.2ft High. (2.45+0.1+0.45)x2x2.5 m HIGH		
Volume:		15 m <sup>3</sup>	3962 USG	Usable 2851 + x
Bolts / Nuts:		S/S A4 - 316		
Insulation:		Non-Insulated		
Project Name:				
Template				
Contractor:				
Cougar USA				
Consultant:				
-				
Done By:		JC	Reviewed by:	
			Verified by:	-
Revisions				
No.	Issue Date	Description		
1	25Sept'20	NEW		



TANK-PLAN

TANK COMPONENTS				
No.	Description	Material	Qty	Remarks
1	Water tank	FRP	1	Colour GRAY
2	Manhole Cover	FRP	1	S/S Hinges & Locks
3	Internal Ladder	FRP/SS	1	Height : 2m
4	External Ladder	G.I.	1	Height : 2m
5	Air vent	PVC	2	Light & Insect Proof 4" Cow Type
6	Flanges	A Class 150	-	SS 304 Connection Flange
		B Class 150	-	SS 304 Connection Flange
		C Class 150	-	Steel Threaded Flange
		D Class 150	-	Steel Threaded Flange
		E Class 150	-	Steel Threaded Flange
		F PVC	-	Connection Flange
7	Water Level Indicator	C&M	2	Height : 2m
8	Vortex Assembly	FRP	2	Vortex plate Assembly
9	Side Man Way	FRP	2	-
10	Inspection Lid	FRP	1	-

NOTES:		CAUTIONS	
1.	Allow a minimum space of 50 cm all around the tank's foundation.	1.	Maximum allowable deflection in concrete foundation = +/- 2mm
2.	For sizes of items 6, 7, 8, 9 & 10, please refer to catalogue.	2.	FTC will not be held liable if the erection of our water tanks are not made in accordance to the technical requirements of concrete foundation, steel footing and water tank assembly drawings.
3.	Overflow shall be minimum twice the volume of inlet.	3.	Overflow shall flow freely to the ground.
4.	Overflow shall be minimum twice the volume of inlet.	4.	All tanks shall be electrically grounded.

GRP Panel Type Water Tanks				
Seismic Load Kh=0.3G				
Tank size:	(8+0.32+1.47)x6.56x8.2ft High. (2.45+0.1+0.45)x2x2.5 m HIGH			
Volume:	15 m <sup>3</sup>	3962 USG	Usable	2851 + x
Bolts / Nuts:	S/S A4 - 316			
Insulation:	Non-Insulated			

Project Name:				
Template				

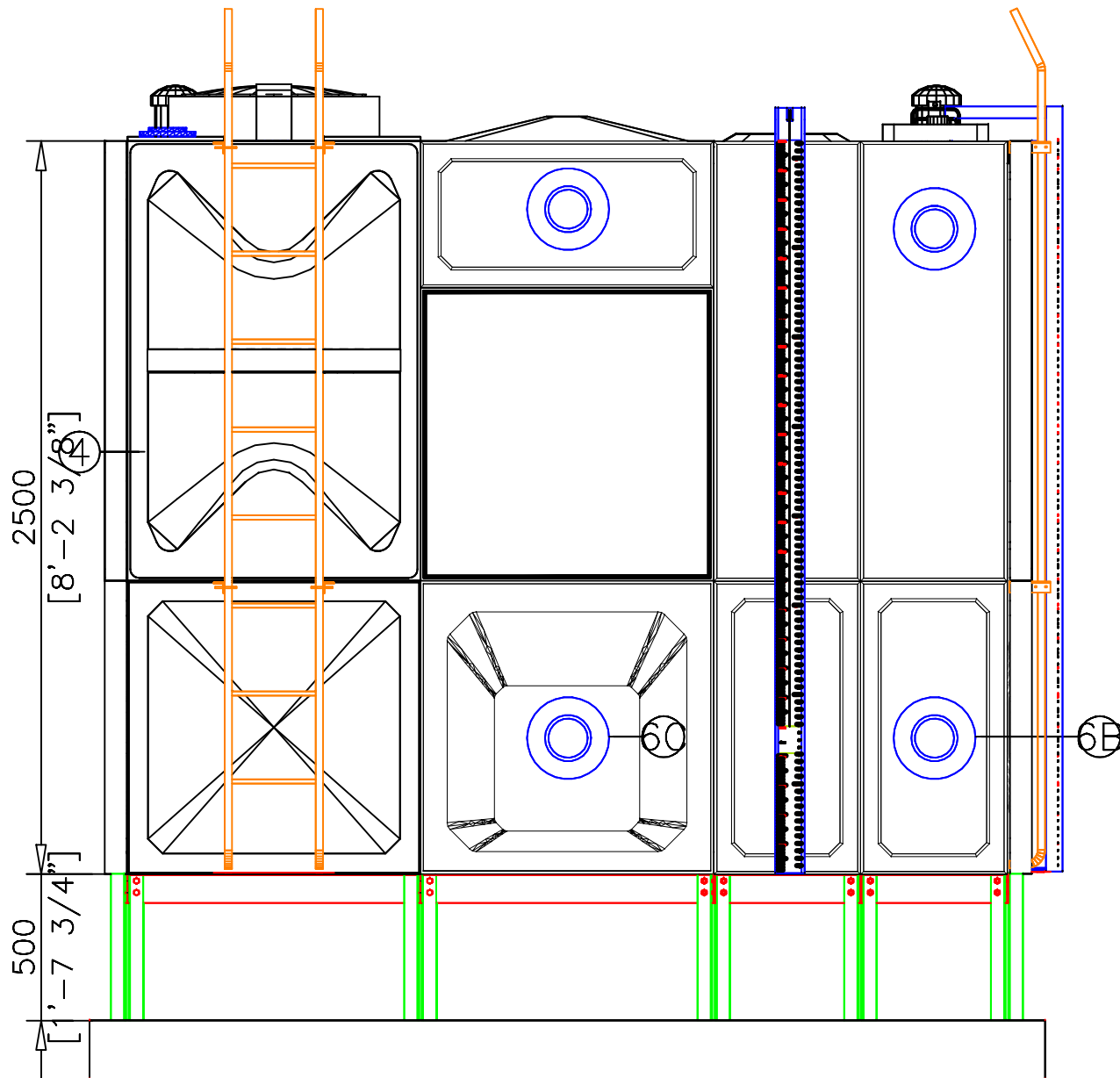
Contractor:				
Cougar USA				

Consultant:				
-				

Done By:	JC	Reviewed by:	
		Verified by:	-
Revisions			
No.	Issue Date	Description	
1	25Sept'20	NEW	

<b>FTC</b>	<b>FIBER TECHNOLOGY CORPORATION</b>
Head Office:	
Lorton, Virginia, United States of America	
Regional Office:	
Jebel Ali Free Zone, Dubai, U.A.E.	

Copyright Fiber Technology Corporation



FRONT ELEVATION

TANK COMPONENTS				
No.	Description	Material	Qty	Remarks
1	Water tank	FRP	1	Colour GRAY
2	Manhole Cover	FRP	1	S/S Hinges & Locks
3	Internal Ladder	FRP/SS	1	Height : 2m
4	External Ladder	G.I.	1	Height : 2m
5	Air vent	PVC	2	Light & Insect Proof 4" Cow Type
6	Flanges	Class 150	-	SS 304 Connection Flange
		Class 150	-	SS 304 Connection Flange
		Class 150	-	Steel Threaded Flange
		Class 150	-	Steel Threaded Flange
		Class 150	-	Steel Threaded Flange
		Class 150	-	Steel Threaded Flange
		PVC	-	Connection Flange
7	Water Level Indicator	C&M	2	Height : 2m
8	Vortex Assembly	FRP	2	Vortex plate Assembly
9	Side Man Way	FRP	2	-
10	Inspection Lid	FRP	1	-

- NOTES:**
- Allow a minimum space of 50 cm all around the tank's foundation.
  - Maximum allowable deflection in concrete foundation = +/- 2mm.
  - For sizes of items 6, 7, 8, 9 & 10, please refer to catalogue.
  - FTC will not be held liable if the erection of our water tanks are not made in accordance to the technical requirements of concrete foundation, steel footing and water tank assembly drawings.
  - Overflow shall be minimum twice the volume of inlet.
  - Overflow shall flow freely to the ground.
  - All tanks shall be electrically grounded.

GFRP Panel Type Water Tanks			
Seismic Load Kh=0.3G			
<b>Tank size:</b>	(8+0.32+1.47)x6.56x8.2ft High. (2.45+0.1+0.45)x2x2.5 m HIGH		
<b>Volume:</b>	15 m <sup>3</sup>	3962 USG	Usable 2851 + x
<b>Bolts / Nuts:</b>	S/S A4 - 316		
<b>Insulation:</b>	Non-Insulated		

**Project Name:**

Template

**Contractor:**

Cougar USA

**Consultant:**

-

Done By: JC Reviewed by:

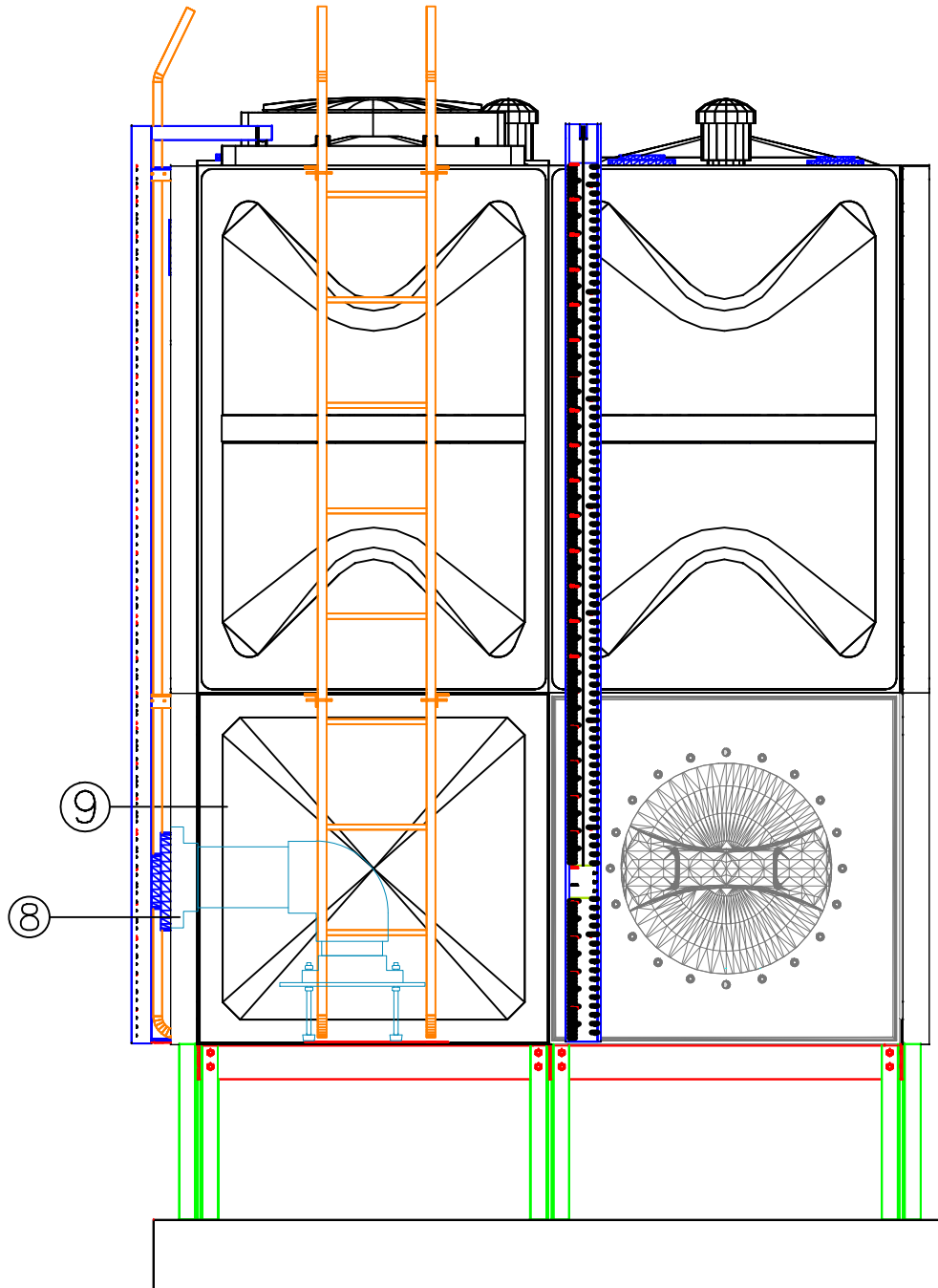
Verified by: -

Revisions		
No.	Issue Date	Description
1	25Sept'20	NEW

**FTC** FIBER TECHNOLOGY CORPORATION

Head Office:  
Lorton, Virginia, United States of America

Regional Office:  
Jebel Ali Free Zone, Dubai, U.A.E.



TANK-RIGHT ELEVATION

#### TANK COMPONENTS

No.	Description	Material	Qty	Remarks
1	Water tank	FRP	1	Colour GRAY
2	Manhole Cover	FRP	1	S/S Hinges & Locks
3	Internal Ladder	FRP/SS	1	Height : 2m
4	External Ladder	G.I.	1	Height : 2m
5	Air vent	PVC	2	Light & Insect Proof 4" Cow Type
6	Flanges	Class 150	-	SS 304 Connection Flange
		Class 150	-	SS 304 Connection Flange
		Class 150	-	Steel Threaded Flange
		Class 150	-	Steel Threaded Flange
		Class 150	-	Steel Threaded Flange
		Class 150	-	Steel Threaded Flange
		PVC	-	Connection Flange
7	Water Level Indicator	C&M	2	Height : 2m
8	Vortex Assembly	FRP	2	Vortex plate Assembly
9	Side Man Way	FRP	2	-
10	Inspection Lid	FRP	1	-

#### NOTES:

- Allow a minimum space of 50 cm all around the tank's foundation.
- Maximum allowable deflection in concrete foundation = +/- 2mm.
- For sizes of items 6, 7, 8, 9 & 10, please refer to catalogue.
- FTC will not be held liable if the erection of our water tanks are not made in accordance to the technical requirements of concrete foundation, steel footing and water tank assembly drawings.
- Overflow shall be minimum twice the volume of inlet.
- Overflow shall flow freely to the ground.
- All tanks shall be electrically grounded.

#### CAUTIONS

#### GFRP Panel Type Water Tanks

Seismic Load Kh=0.3G

<b>Tank size:</b>	(8+0.32+1.47)x6.56x8.2ft High. (2.45+0.1+0.45)x2x2.5 m HIGH		
<b>Volume:</b>	15 m <sup>3</sup>	3962 USG	Usable 2851 + x
<b>Bolts / Nuts:</b>	S/S A4 - 316		
<b>Insulation:</b>	Non-Insulated		

#### Project Name:

Template

#### Contractor:

Cougar USA

#### Consultant:

-

Done By:	JC	Reviewed by:	
Verified by:			-

#### Revisions

No.	Issue Date	Description
1	25Sept'20	NEW

**FTC** FIBER TECHNOLOGY CORPORATION

Head Office:  
Lorton, Virginia, United States of America

Regional Office:  
Jebel Ali Free Zone, Dubai, U.A.E.